

Release Notes

Basic Information

Product Model	ADS NX3-M1600E ADS-M NX3-HD2700
Software Version	V4.5R90F03
Upgrade File	update_adsm_V4.5R90F03build20211021.zip (MD5: 4a313812adc102e96ea31f9deb00254b)
Release Date	2021-10-28
How to Obtain	Contact NSFOCUS technical support.

Version Mapping

Source Software Version	V4.5R90F02–V4.5R90F02SP09
Product Model	ADS NX3-M1600E ADS-M NX3-HD2700

Managed Device Version	<p>ADS versions for collaboration:</p> <p>V4.5.88.15.sp13–V4.5.88.15.sp15</p> <p>V4.5R90F00–V4.5R90F00SP06</p> <p>V4.5R90F01–V4.5R90F01SP09</p> <p>V4.5R90F02–V4.5R90F02SP07</p> <p>V4.5R90F03</p> <p>ADS versions the adaptation applies to (other versions do not support ADS M's region management and intelligent protection):</p> <p>V4.5R90F03</p> <p>NTA-DFI versions for collaboration:</p> <p>V4.5R90F00–V4.5R90F00SP05</p> <p>V4.5R90F01–V4.5R90F01SP06</p> <p>V4.5R90F02–V4.5R90F02SP06</p> <p>V4.5R90F03</p> <p>NTA-DFI versions the adaptation applies to (other versions do not support ADS M's management of their region security):</p> <p>V4.5R90F03</p> <p>NTA-DPI versions for collaboration:</p> <p>V4.5R01M01SP08</p> <p>NTA-DPI versions the adaptation applies to (other versions do not support ADS M's management of their region security):</p> <p>V4.5R01M01SP08</p>
Client	<p>Internet Explorer 11</p> <p>Chrome</p> <p>Firefox</p>
Other System or Tool	None
Documentation	NSFOCUS ADS M User Guide (V4.5R89F03)

Notes:

Make sure that this version is used together with an ADS or NTA version listed in the **Managed Device Version** row. Otherwise, the collaboration function will be unable to work properly.

New and Optimized Functions

No.	Function Description
1	The region security module is optimized for adaptation to ADS/NTA-DFI V4.5R90F03.
2	The region security module is optimized for adaptation to NTA-DPI V4.5R01M01SP08.
3	STARTTLS is supported by the email service.
4	The smart protection system is optimized.
5	The configuration import function is optimized.
6	The About page is updated.

Upgrade and Rollback Paths

ADS M V4.5R90F03 can be upgraded from a version in the range of **V4.5R90F02** to **V4.5R90F02SP09**.

Note:

After being upgraded to V4.5R90F03, ADS M cannot be rolled back to the source version.

Upgrade Procedure

Make sure that the source version of ADS M is within the range of **V4.5R90F02** to **V4.5R90F02SP09**. If not, contact NSFOCUS technical support for upgrade of the current version to a version within this range. For the version from **V4.5R90F02** to **V4.5R90F02SP07**, make sure that the patch **patch.V4.5R90F02SP07_system_update.build20210329** is installed. If not, contact NSFOCUS technical support.

To perform the upgrade, follow these steps:

- Step 1** Log in to the web-based manager of ADS M.
- Step 2** Choose **Administration > Local Settings > System Upgrade**.
The **System Upgrade** page appears.
- Step 3** Browse to the upgrade file **update_adsm_V4.5R90F03build20211021.zip**. Then click **Upload**.
- Step 4** After the upgrade package is successfully uploaded and the version number is confirmed to be correct, click **OK** to start the installation.
- Step 5** After the system informs you that the upgrade is complete, click **OK** to restart the system. **If no message is displayed to indicate installation completion, please wait 3 minutes. Then the system will automatically restart.**
- Step 6** Refresh the web-based manager. Click **About** in the upper-right corner of the manager to check the current system version.
 - If **Product Version** is **V4.5R89F03** and **Build Date** is **20211021**, the upgrade succeeded.
 - If **Product Version** is not **V4.5R90F03** or **Build Date** is not **20211021**, the upgrade failed. In this case, contact NSFOCUS technical support.

---End

Description of Function Changes


1 Addition of STARTTLS Support for the Email Service

The SMTP server can be configured to use STARTTLS.

SMTP Server	<input type="text" value="mail.nsfocus.com"/>
Port No.	<input type="text" value="587"/>
From	<input type="text" value="lihao6@intra.nsfocus.com"/>
Secured by SSL	<input type="checkbox"/>
Use STARTTLS	<input checked="" type="checkbox"/>
Authentication Required	<input checked="" type="checkbox"/>
Username	<input type="text" value="lihao6"/>
Password	<input type="text" value="Edit or leave empty."/>

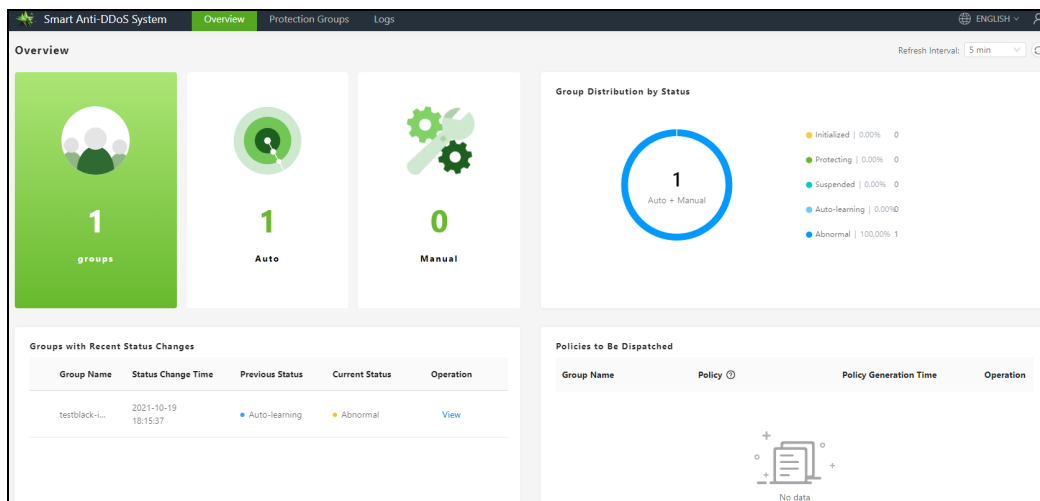
2 Addition of Production Group-Specific Blacklists

For adaptation to ADS V4.5R90F03, the protection group-specific blacklist function is added in the region module of ADS M. Specifically, when creating or editing an IP group, you can configure the protection group-specific function for this IP group.

You can click  in the **Edit** column to edit detailed blacklist configurations.

3 Smart Protection System Optimization

The smart protection system is optimized in terms of function and UI presentation. The following figure shows the web-based manager of the smart protection system.



4 Support Management of NTA-DPI Devices

ADS M adds supports for NTA-DPI devices. When creating a new region, you can select NTA-DPI devices on the **Basic Information** page.

